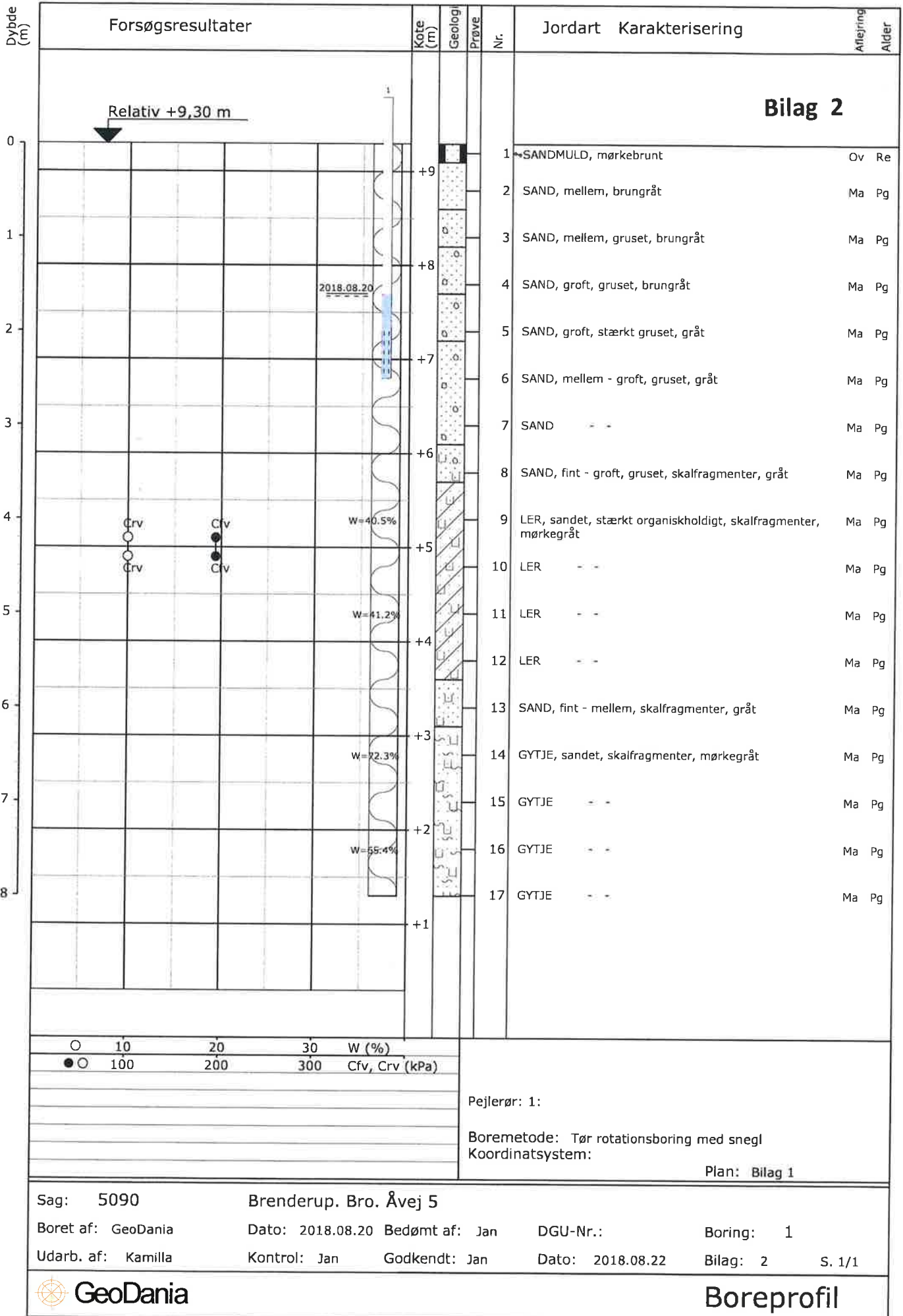


Bilag 1



1.71 m

Hawandstand



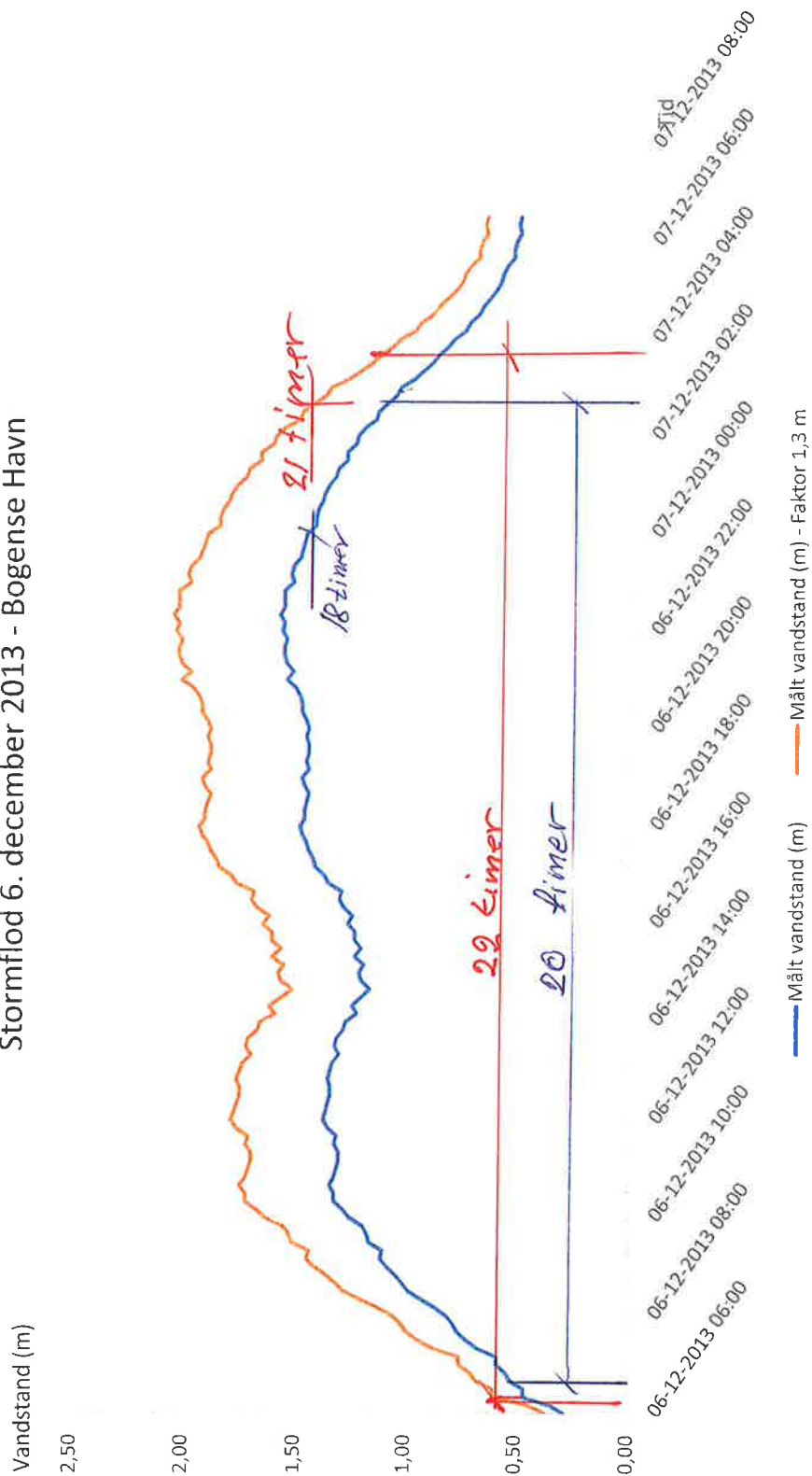
Bilag 3-1

Volumen i m ³ afhængigt af afstrømning og timer, Storå og Pavebæk									
Hyppighed Afstrømning	l/sek/km ²	95% 25	Vandstand m	90% 20	Vandstand m	85% 17	Vandstand m	80% 14	Vandstand m
Timer	1	16.074	0,50	12.859	0,50	10.930	0,50	9.001	0,50
	2	32.148	0,59	25.718	0,57	21.861	0,56	18.003	0,55
	3	48.222	0,68	38.578	0,65	32.791	0,62	27.004	0,60
	4	64.296	0,72	51.437	0,72	43.721	0,69	36.006	0,65
	5	80.370	0,75	64.296	0,75	54.652	0,71	45.007	0,71
	6	96.444	0,79	77.155	0,78	65.582	0,73	54.009	0,73
	7	112.518	0,82	90.014	0,80	76.512	0,76	63.010	0,74
	8	128.592	0,86	102.874	0,83	87.443	0,78	72.012	0,76
	9	144.666	0,89	115.733	0,86	98.373	0,80	81.013	0,78
	10	160.740	0,92	128.592	0,89	109.303	0,83	90.014	0,80
	11	176.814	0,96	141.451	0,91	120.234	0,85	99.016	0,82
	12	192.888	0,99	154.310	0,94	131.164	0,87	108.017	0,84
	13	208.962	1,02	167.170	0,97	142.094	0,90	117.019	0,86
	14	225.036	1,05	180.029	1,00	153.024	0,92	126.020	0,88
	15	241.110	1,08	192.888	1,02	163.955	0,95	135.022	0,90
	16	257.184	1,10	205.747	1,04	174.885	0,97	144.023	0,92
	17	273.258	1,13	218.606	1,06	185.815	0,99	153.024	0,94
	18	289.332	1,16	231.466	1,08	196.746	1,02	162.026	0,96
	19	305.406	1,19	244.325	1,11	207.676	1,03	171.027	0,98
	20	321.480	1,22	257.184	1,13	218.606	1,05	180.029	1,00
	21	337.554	1,24	270.043	1,15	229.537	1,07	189.030	1,01
	22	353.628	1,27	282.902	1,17	240.467	1,09	198.032	1,03
	23	369.702	1,30	295.762	1,20	251.397	1,11	207.033	1,04
	24	385.776	1,33	308.621	1,22	262.328	1,13	216.035	1,06
	25	401.850	1,35	321.480	1,24	273.258	1,15	225.036	1,07
	26	417.924	1,38	334.339	1,26	284.188	1,17	234.037	1,09
	27	433.998	1,41	347.198	1,28	295.119	1,18	243.039	1,10
	28	450.072	1,44	360.058	1,31	306.049	1,20	252.040	1,12
	29	466.146	1,46	372.917	1,33	316.979	1,22	261.042	1,13
	30	482.220	1,49	385.776	1,35	327.910	1,24	270.043	1,15
	31	498.294		398.635	1,37	338.840	1,26	279.045	1,17
	32	514.368		411.494	1,40	349.770	1,28	288.046	1,18
	33	530.442		424.354	1,42	360.701	1,30	297.048	1,20
	34	546.516		437.213	1,44	371.631	1,32	306.049	1,21
	35	562.590		450.072	1,46	382.561	1,34	315.050	1,23
	36	578.664		462.931	1,48	393.492	1,35	324.052	1,24

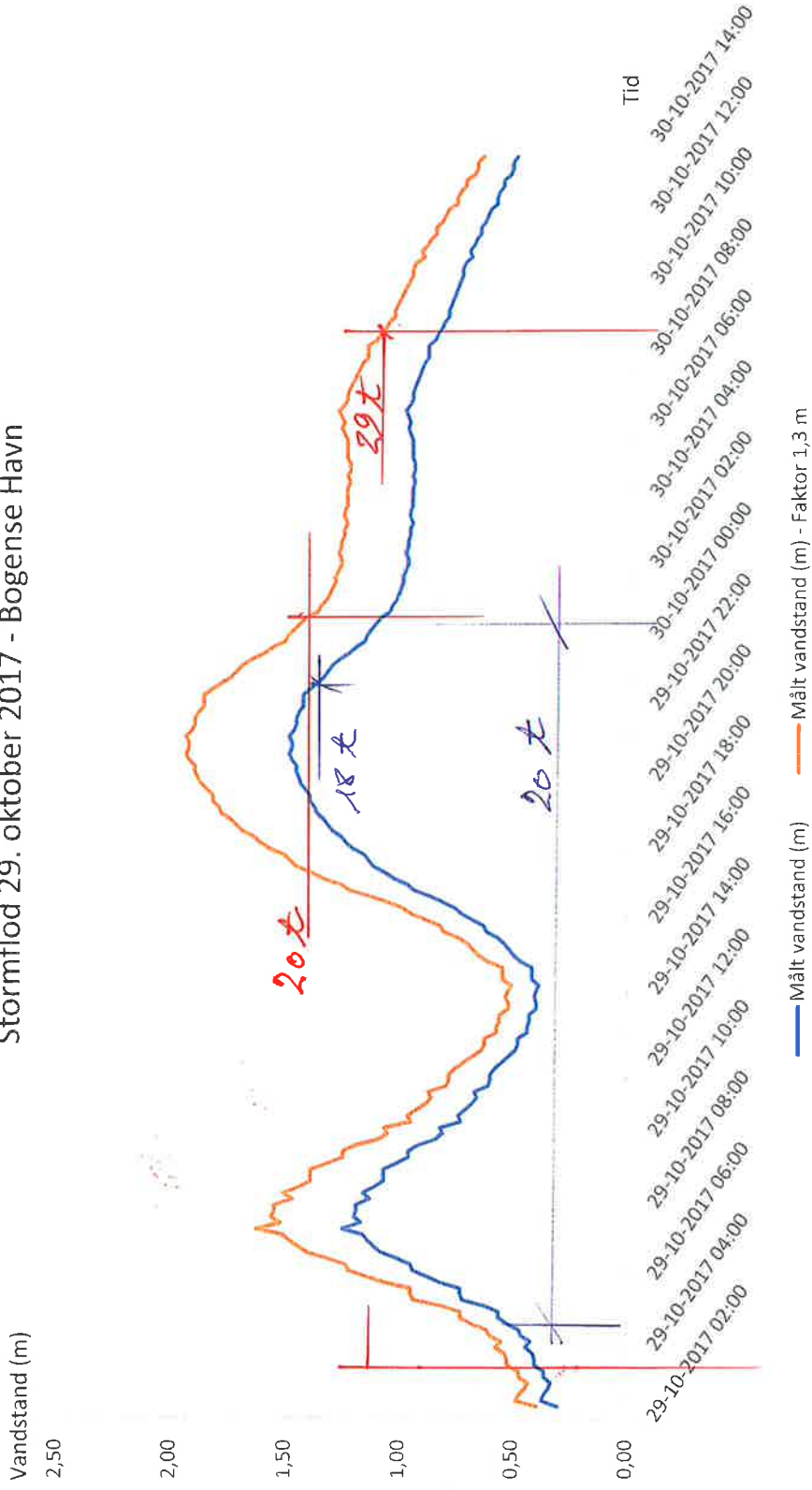
Bilag 3-2

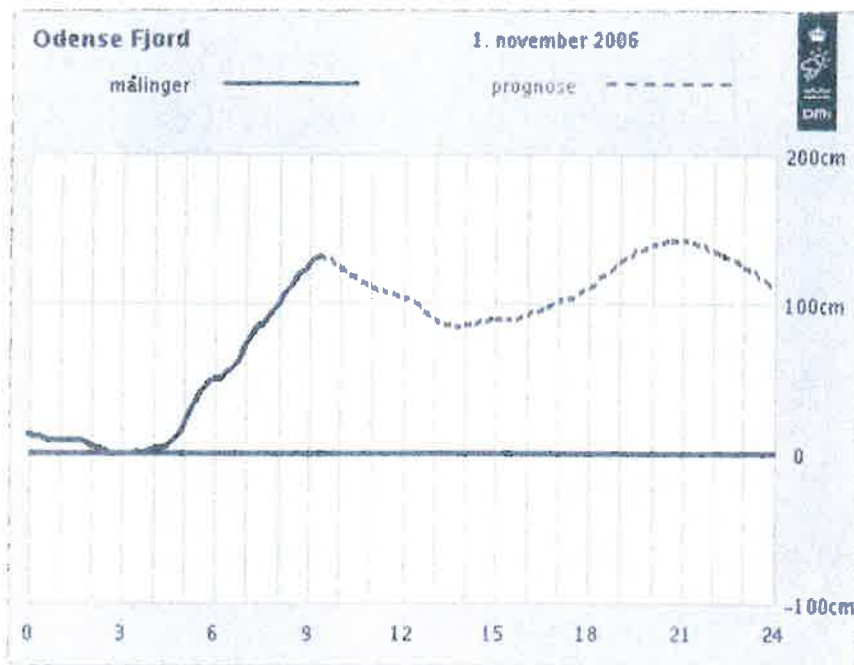
Volumen i m ³ afhængigt af afstrømning og timer, Storå uden Pavebæk									
Hyppighed Afstrømning	l/sek/km ²	95%	Vandstand	90%	Vandstand	85%	Vandstand	80%	Vandstand
		25	m	20	m	17	m	14	m
Timer	1	14.391	0,50	11.513	0,50	9.786	0,50	8.059	0,50
	2	28.782	0,64	23.026	0,62	19.572	0,60	16.118	0,58
	3	43.173	0,72	34.538	0,73	29.358	0,70	24.177	0,66
	4	57.564	0,79	46.051	0,79	39.144	0,74	32.236	0,70
	5	71.955	0,86	57.564	0,85	48.929	0,79	40.295	0,74
	6	86.346	0,93	69.077	0,90	58.715	0,84	48.354	0,78
	7	100.737	1,00	80.590	0,96	68.501	0,89	56.413	0,82
	8	115.128	1,05	92.102	1,02	78.287	0,94	64.472	0,86
	9	129.519	1,09	103.615	1,05	88.073	0,99	72.531	0,90
	10	143.910	1,14	115.128	1,09	97.859	1,02	80.590	0,94
	11	158.301	1,18	126.641	1,13	107.645	1,05	88.649	0,98
	12	172.692	1,23	138.154	1,16	117.431	1,08	96.708	1,01
	13	187.083	1,27	149.666	1,20	127.216	1,11	104.766	1,03
	14	201.474	1,32	161.179	1,23	137.002	1,14	112.825	1,06
	15	215.865	1,36	172.692	1,27	146.788	1,17	120.884	1,08
	16	230.256	1,41	184.205	1,31	156.574	1,20	128.943	1,11
	17	244.647	1,45	195.718	1,34	166.360	1,23	137.002	1,13
	18	259.038	1,50	207.230	1,38	176.146	1,26	145.061	1,16
	19	273.429		218.743	1,41	185.932	1,30	153.120	1,19
	20	287.820		230.256	1,45	195.718	1,33	161.179	1,21
	21	302.211		241.769	1,49	205.503	1,36	169.238	1,24
	22	316.602		253.282	1,52	215.289	1,39	177.297	1,26
	23	330.993		264.794		225.075	1,42	185.356	1,29
	24	345.384		276.307		234.861	1,45	193.415	1,31
	25	359.775		287.820		244.647	1,48	201.474	1,34
	26	374.166		299.333		254.433	1,51	209.533	1,36
	27	388.557		310.846		264.219		217.592	1,39
	28	402.948		322.358		274.005		225.651	1,41
	29	417.339		333.871		283.791		233.710	1,44
	30	431.730		345.384		293.576		241.769	1,46
	31	446.121		356.897		303.362		249.828	1,49
	32	460.512		368.410		313.148		257.887	1,51

Stormflod 6. december 2013 - Bogense Havn

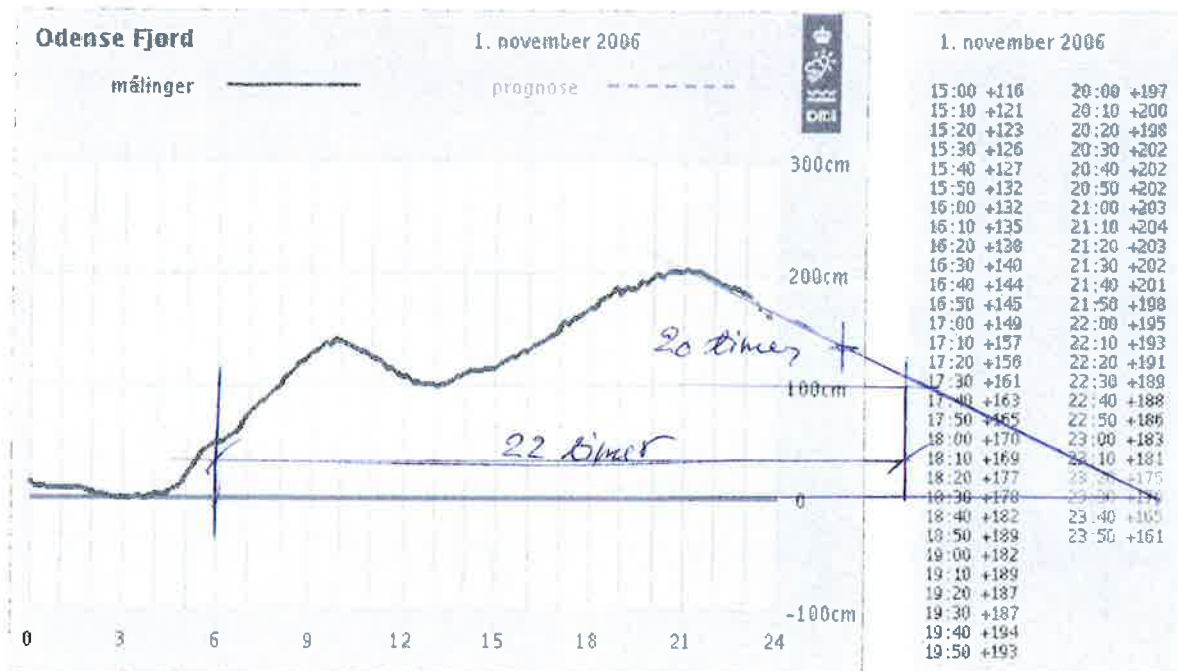


Stormflod 29. oktober 2017 - Bogense Havn





Vandstanden i Odense Fjord, Fynsværket, Måling og prognose d. 1. november 2006 kl. 9.30



Vandstanden i Odense Fjord, Fynsværket, Måling d. 1. november 2006 kl. 23.10